

SEZ-M R32

Ceiling Concealed Ducted System

Standard Inverter Heat Pump (Single Phase)

Mr.SLIM™

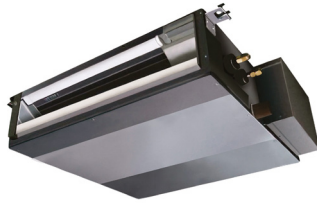
Designed for offices, restaurants and shops, the **SEZ-M** series operates at low noise levels. Its low unit height and lightweight design also help to make installation easier and more convenient.

R32

Key Features & Benefits:

- Compact ceiling concealed ducted unit with an unobtrusive design
- Low Static Pressure Level - resulting in noise reduction
- Low Unit Height - minimal intrusion into occupied space

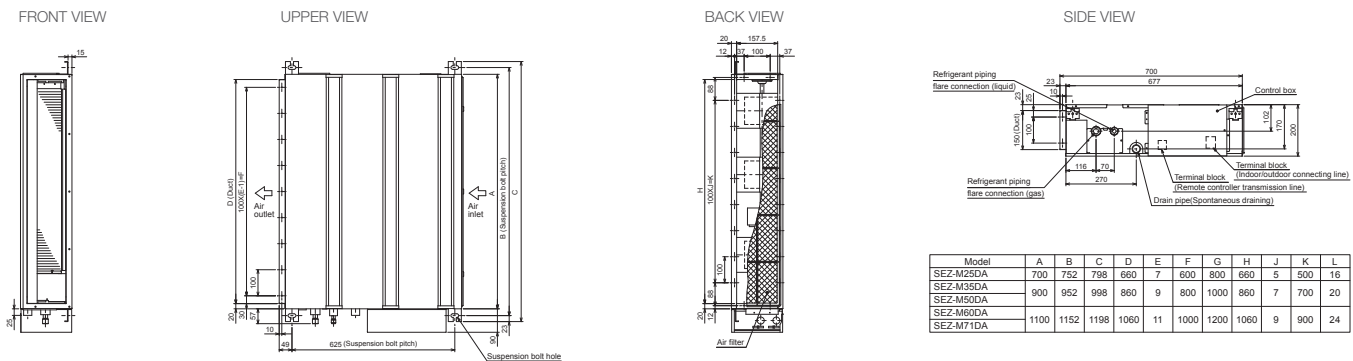




SEZ-M INDOOR UNITS		SEZ-M25DA	SEZ-M35DA	SEZ-M50DA	SEZ-M60DA	SEZ-M71DA
CAPACITY (kW)	Heating (nominal)	2.9 (1.3-4.2)	4.2 (1.1-5.0)	6.0 (1.5-7.2)	7.4 (1.6-8.0)	8.0 (2.0-10.2)
	Cooling (nominal)	2.5 (1.4-3.2)	3.5 (0.7-3.9)	5.0 (1.1-5.6)	6.1 (1.6-6.3)	7.1 (2.2-8.1)
	Heating (UK)	2.47 (1.11-3.57)	3.57 (0.94-4.25)	5.10 (1.28-6.12)	6.29 (1.36-6.80)	6.80 (1.70-8.67)
	Cooling (UK)	2.30 (1.29-2.94)	3.22 (0.64-3.59)	4.60 (1.01-5.15)	5.61 (1.47-5.80)	6.53 (2.02-7.45)
SHF (nominal)		0.78	0.76	0.76	0.79	0.74
COP / EER (nominal)		3.61 / 3.50	3.90 / 3.50	3.71 / 3.23	3.61 / 3.30	3.50 / 3.30
SCOP / SEER (BS EN14825)		3.80 / 5.30	4.10 / 5.90	4.00 / 6.00	4.20 / 5.50	3.90 / 5.50
ERP ENERGY EFFICIENCY CLASS	Heating/Cooling	A / A	A+ / A+	A+ / A+	A+ / A	A / A
AIRFLOW (l/s)	Lo-Mi-Hi	100-117-150	117-150-183	167-217-250	200-250-300	200-267-333
PIPE SIZE mm (in)	Gas	9.52 (3/8")	9.52 (3/8")	12.7 (1/2")	15.88 (5/8")	15.88 (5/8")
	Liquid	6.35 (1/4")	6.35 (1/4")	6.35 (1/4")	6.35 (1/4")	9.52 (3/8")
EXTERNAL STATIC PRESSURE (Pa)		5-15-35-50	5-15-35-50	5-15-35-50	5-15-35-50	5-15-35-50
SOUND PRESSURE LEVEL (dBA)	Lo-Mi-Hi	22-25-29	23-28-33	29-33-36	29-33-37	29-34-39
SOUND POWER LEVEL (dBA)		50	53	57	58	60
DIMENSIONS (mm)	Width x Depth x Height	790 x 700 x 200	990 x 700 x 200	990 x 700 x 200	1190 x 700 x 200	1190 x 700 x 200
WEIGHT (kg)		18	21	23	27	27
ELECTRICAL SUPPLY		Fed by Outdoor Unit	Fed by Outdoor Unit	Fed by Outdoor Unit	Fed by Outdoor Unit	Fed by Outdoor Unit
FUSE RATING (BS88) - HRC (A)		6	6	6	6	6
INTERCONNECTING CABLE No. CORES		4	4	4	4	4
WIRED REMOTE CONTROLLER REFERENCE		PAR-40MAA	PAR-40MAA	PAR-40MAA	PAR-40MAA	PAR-40MAA

SUZ-M OUTDOOR UNITS		SUZ-M25VAR2	SUZ-M35VAR2	SUZ-M50VAR2	SUZ-M60VAR2	SUZ-M71VAR1
SOUND PRESSURE LEVEL (dBA)	Heating/Cooling	45 / 46	48 / 48	48 / 49	49 / 51	49 / 51
SOUND POWER LEVEL (dBA)	Heating/Cooling	59	59	64	65	66
WEIGHT (kg)		30	35	41	54	55
DIMENSIONS (mm)	Width x Depth x Height	800 x 285 x 550	800 x 285 x 550	800 x 285 x 714	840 x 330 x 880	840 x 330 x 880
ELECTRICAL SUPPLY		220-240v, 50Hz	220-240v, 50Hz	220-240v, 50Hz	220-240v, 50Hz	220-240v, 50Hz
PHASE		Single	Single	Single	Single	Single
SYSTEM POWER INPUT (kW)	Heating/Cooling (nominal)	0.80 / 0.71	1.07 / 1.00	1.61 / 1.54	2.04 / 1.84	2.28 / 2.15
	Heating/Cooling (UK)	0.68 / 0.61	0.91 / 0.86	1.37 / 1.32	1.73 / 1.58	1.94 / 1.85
STARTING CURRENT (A)		3.7	5.0	8.0	9.3	9.5
SYSTEM RUNNING CURRENT (A)	Heating/Cooling [MAX]	3.7 / 3.0 [6.8]	5.0 / 4.1 [8.5]	8.0 / 7.1 [13.5]	9.3 / 8.4 [14.8]	9.5 / 9.1 [14.8]
FUSE RATING (BS88) - HRC (A)		10	10	20	20	20
MAINS CABLE No. CORES		3	3	3	3	3
MAX PIPE LENGTH (m)		20	20	30	30	30
MAX HEIGHT DIFFERENCE (m)		12	12	30	30	30
CHARGE REFRIGERANT (kg) / CO ₂ EQUIVALENT (t) - R32 (GWP 675)		0.65 / 0.44	0.90 / 0.61	1.20 / 0.81	1.25 / 0.84	1.45 / 0.98
MAX ADDITIONAL REFRIGERANT (kg) / CO ₂ EQUIVALENT (t) - R32 (GWP 675)		0.91 / 0.61	1.16 / 0.78	1.66 / 1.12	1.71 / 1.15	2.37 / 1.60

SEZ-M25/35/50/60/71DA DIMENSIONS



MITSUBISHI ELECTRIC
Changes for the Better

Telephone: 01707 282880
email: air.conditioning@meuk.mee.com
les.mitsubishielectric.co.uk

[@meuk_les](https://twitter.com/meuk_les) | [Mitsubishi Electric Living Environmental Systems UK](https://www.linkedin.com/company/mitsubishi-electric-living-environmental-systems-uk/) | [Mitsubishi Electric Cooling and Heating UK](https://www.facebook.com/mitsubishielectricuk_les) | [mitsubishielectricuk_les](https://www.instagram.com/mitsubishielectricuk_les) | [Mitsubishi Electric Living Environmental Systems UK](https://www.youtube.com/channel/UC...) | [BLOG thehub.mitsubishielectric.co.uk](https://www.blog.mitsubishielectric.co.uk)

UNITED KINGDOM Mitsubishi Electric Europe Living Environment Systems Division, Travellers Lane, Hatfield, Hertfordshire, AL10 8XB, England. Telephone: 01707 282880 Fax: 01707 278881
IRELAND Mitsubishi Electric Europe, Westgate Business Park, Ballymount, Dublin 24, Ireland. Telephone: (01) 419 8800 Fax: (01) 419 8890 International code: (003531)

Country of origin: United Kingdom - Japan - Thailand - Malaysia. ©Mitsubishi Electric Europe 2020. Mitsubishi and Mitsubishi Electric are trademarks of Mitsubishi Electric Europe B.V. The company reserves the right to make any variation in technical specification to the equipment described, or to withdraw or replace products without prior notification or public announcement. Mitsubishi Electric is constantly developing and improving its products. All descriptions, illustrations, drawings and specifications in this publication present only general particulars and shall not form part of any contract. All goods are supplied subject to the Company's General Conditions of Sale, a copy of which is available on request. Third-party product and brand names may be trademarks or registered trademarks of their respective owners.

Note: The fuse rating is for guidance only. Please refer to the relevant databook for detailed specification. It is the responsibility of a qualified electrician/electrical engineer to select the correct cable size and fuse rating based on current regulation and site specific conditions. Mitsubishi Electric's air conditioning equipment and heat pump systems contain a fluorinated greenhouse gas, R410A (GWP:2088), R32 (GWP:675), R407C (GWP:1774), R134a (GWP:1430), R513A (GWP:631), R454B (GWP:466), R1234ze (GWP:7) or R1234yf (GWP:4). *These GWP values are based on Regulation (EU) No 517/2014 from IPCC 4th edition. In case of Regulation (EU) No.626/2011 from IPCC 3rd edition, these are as follows. R410A (GWP:1975), R32 (GWP:550), R407C (GWP:1650) or R134a (GWP:1300).

Effective as of May 2020