

FTXM-M

The feel-good vision of the future





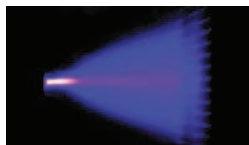
Enjoy state-of-the-art comfort

This unit typifies Daikin's future vision of air conditioning. Wrapped in fresh European design, it impresses with brilliant seasonal efficiency values up to A+++ without compromising comfort. The exceptional Daikin Flash Streamer guarantees superior air purification. With our online controller app, you have control from wherever you are. It also displays energy consumption for all R-32 products.. 3D air flow and 2-area intelligent eye create perfect and non-invasive air flow. And all this with superbly quiet operation. This full-range series is the ideal choice for most applications. Enjoy a cosy home – without accepting compromises.



BLUEVOLUTION

Better air quality with the Daikin Flash Streamer



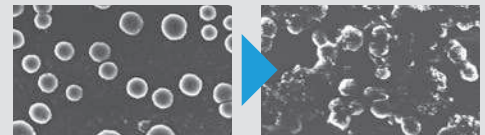
This all-in-one heating and cooling unit purifies the air year round. Using electrons to trigger chemical reactions with air molecules, the Flash Streamer breaks down moulds, viruses or NO_x, leaving you with perfect, allergen-free air.



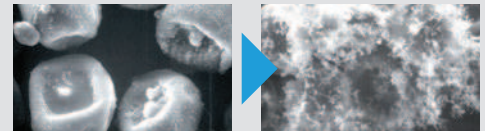
Viruses and allergens were placed on the electrode of the streamer discharge unit and then photographed through an electron microscope after being irradiated.

(Testing organization: Yamagata University and Wakayama Medical University)

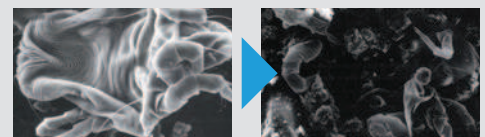
Virus
before and after irradiation



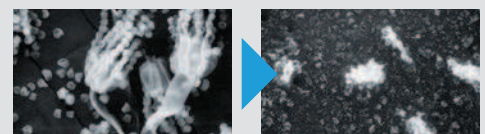
Pollen-based allergen
before and after irradiation



Fungal allergens
before and after irradiation



Allergens from animate beings
before and after irradiation



Wall mounted unit

Attractive, wall mounted design with perfect indoor air quality

- › Seasonal efficiency values up to A+++ in cooling and heating thanks to its up-to-date technology and built-in intelligence.
- › Practically inaudible: the unit runs so quietly, you will almost forget it is there.
- › Fresher, cleaner air thanks to Daikin's Flash Streamer technology: you can breathe deep with no worries about impure air
- › 2-area intelligent eye: air flow is sent to a zone other than where the person is located at that moment; if no people are detected, the unit will automatically switch over to the energy-efficient setting.
- › 3D air flow combines vertical and horizontal auto-swing to circulate a stream of warm or cool air right to the corners of even large spaces.
- › Online controller (optional): control your indoor from any location with an app, via your local network or internet and keep an overview on your energy consumption
- › Sleek, unobtrusive air conditioning unit that matches European sensibilities regarding interior design
- › Choosing for an R-32 product, reduces the environmental impact with 68% compared to R-410A and leads directly to lower energy consumption thanks to its high energy efficiency



Efficiency data			FTXM + RXM		multi connection only									
					*20M + 20M	*25M + 25M	*35M + 35M	*42M + 42M	*50M + 50M	*60M + 60M	*71M + 71M			
Cooling capacity	Min./Nom./Max.	kW			1.3/2.0/2.6	1.3/2.5/3.2	1.4/3.5/4.0	1.7/4.2/5.0	1.7/5.02/5.3	-/6.00/-	-/7.10/-			
Heating capacity	Min./Nom./Max.	kW			1.3/2.5/3.5	1.3/2.8/4.7	1.4/4.0/5.2	1.7/5.4/6.0	1.7/5.8/6.5	-/7.00/-	-/8.20/-			
Power input	Cooling	Nom.			0.44	0.56	0.80	1.12	1.36	1.77	2.34			
	Heating	Nom.			0.50	0.56	0.99	1.31	1.45	1.94	2.57			
Seasonal efficiency (according to EN14825)	Cooling	Energy label			A+++			A++						
		Pdesign			2.00	2.50	3.40	4.20	5.00	6.00	6.80			
	SEER			8.53	8.52	8.51	7.50	7.33	6.90	6.11				
	Annual energy consumption			83	103	140	196	239	304	390				
Heating (Average climate)	Energy label			A+++			A++		A+		A			
		Pdesign			2.30	2.40	2.50	4.00	4.60	6.20				
	Annual energy consumption			632	659	686	1,217	1,400	1,498	2,278				
Nominal efficiency	EER			4.57	4.50	4.23	3.75	3.68	3.39	3.03				
	COP			5.00		4.04	4.12	4.00	3.61	3.19				
	Annual energy consumption			219	278	402	560	682	885	1,172				
Energy label	Cooling/Heating			A/A								B/D		

Indoor unit			CTXM15M	FTXM20M	FTXM25M	FTXM35M	FTXM42M	FTXM50M	FTXM60M	FTXM71M	
Dimensions	Unit	HeightxWidthxDepth	297x810x270	272x811x294				295x1,040x300			
Weight	Unit			10				14.5			
Fan - Air flow rate	Cooling	High	-	10.2			12.8	17.5	19.1	20.5	
Sound power level	Cooling		-	57		60	61	60	61	62	
Power supply	Phase / Frequency / Voltage	Hz / V	1~ / 50 / 220-240								

Outdoor unit			RXM		*20M	*25M	*35M	*42M	*50M	*60M	*71M
Dimensions	Unit	HeightxWidthxDepth			550x765x285			735x825x300		735x870x320	
Weight	Unit				31.5			44			
Sound power level	Cooling				59	61		63		66	
Sound pressure level	Cooling	High/Silent operation			-/-		48/44		47/-		
Power supply	Phase / Frequency / Voltage	Hz / V	1~ / 50 / 220-240								
Operation range	Cooling	Ambient	Min.~Max.	°CDB	-10~46						
	Heating	Ambient	Min.~Max.	°CWB	-15~24						
Refrigerant	Type/Charge	kg-TCO ₂ Eq/GWP			R-32/1.2/0.8/675	R-32/1.4/1.0/675	R-32/1.3/0.9/675	R-32/1.5/1.0/675	R-32/1.7/1.1/675		
Piping connections	Piping length	OU - IU	Max.	m	-						
	Level difference	IU - OU	Max.	m	-						
Current - 50Hz	Maximum fuse amps (MFA)		A								

*Note: blue cells contain preliminary data

EER/COP according to Eurovent 2012, for use outside EU only | Nominal efficiency: cooling at 35°/27° nominal load, heating at 7°/20° nominal load