

- Energy recovery ventilation system
- 100 - 1000 m<sup>3</sup>/h



## Energy recovery ventilation system type CHRU-TF

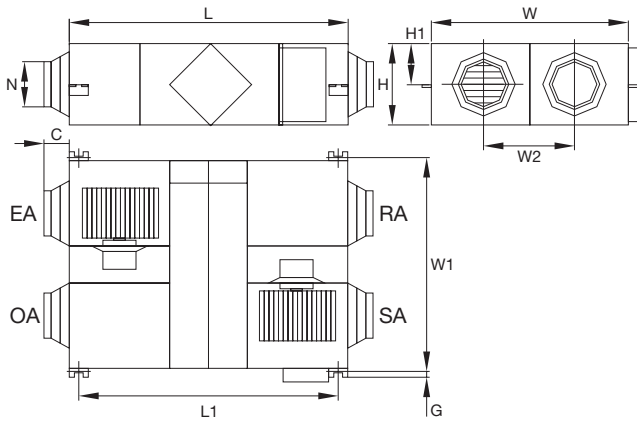
- Energy recovery ventilation system
- Airflow rate: 100 - 1000 m<sup>3</sup>/h

### Characteristics

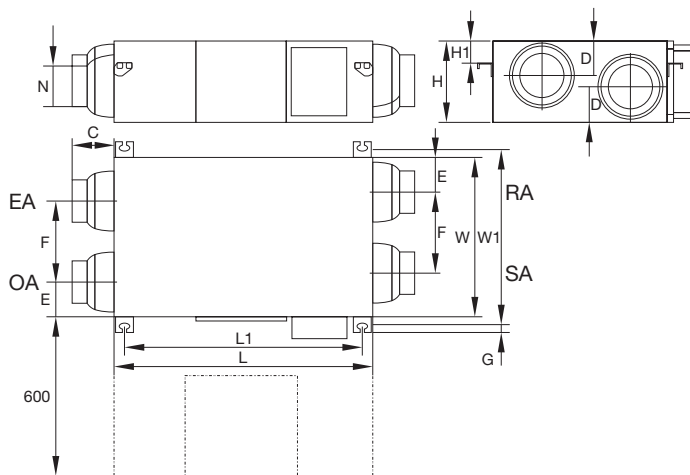
- Energy recovery
- Quiet operation
- Double filters
- Easy installation to ceiling
- By-pass function

### Technical data

Model		CHRU-TF 150	CHRU-TF 250	CHRU-TF 350	CHRU-TF 500	CHRU-TF 650	CHRU-TF 800	CHRU-TF 1000	
Airflow (low/medium/high)	m <sup>3</sup> /h	100/150/150	200/250/250	300/350/350	400/500/500	550/650/650	680/800/800	840/1000/1000	
External pressure (low/medium/high)	Pa	75/90/100	100/120/125	100/110/120	110/130/140	110/150/170	110/120/170	100/120/180	
Enthalpy efficiency	Heating	%	70/63/63	73/65/65	73/65/65	75/67/67	71/65/65	73/65/65	
	Cooling	%	65/60/60	71/62/62	70/62/62	72/63/63	67/60/60	71/63/63	
Temperature efficiency	%	80/75/75	81/73/73	82/74/74	81/76/76	82/74/74	80/74/74	80/76/76	
Noise	dB (A)	25/30/31.5	27/34/34.5	31/37/37.5	29/35/39	37/40/43	37/40/43	36/42/44	
Power Supply		220V / 1Ph / 50Hz							
Input Power	W	105	117	150	200	355	585	690	
Filter class		G3							
Control	Standard	Yes (7-Day Time-clock)							
	BMS (Modus)	Yes							
Fan type		AC Fan Motors							
Fan speeds (supply)		3 Speeds Individual Control							
Fan speeds (exhaust)		3 Speeds Individual Control							
Summer bypass		Yes (Automatic with adjustable range)							
Defrost		Yes (Automatic with adjustable range)							
CO2 Control		Optional controller available (On / Off control with adjustable range)							
Weight	kg	23	25	31	36	60	60	79	
Dimensions	length x width x height	mm	666 x 580 x 264	744 x 599 x 270	744 x 804 x 270	824 x 904 x 270	1116 x 884 x 388	1126 x 834 x 388	1129 x 1216 x 388
	Duct size	mm	Ø150	Ø150	Ø200	Ø200	Ø250	Ø250	Ø250



■ CHRU-TF 150 - CHRU-TF 650

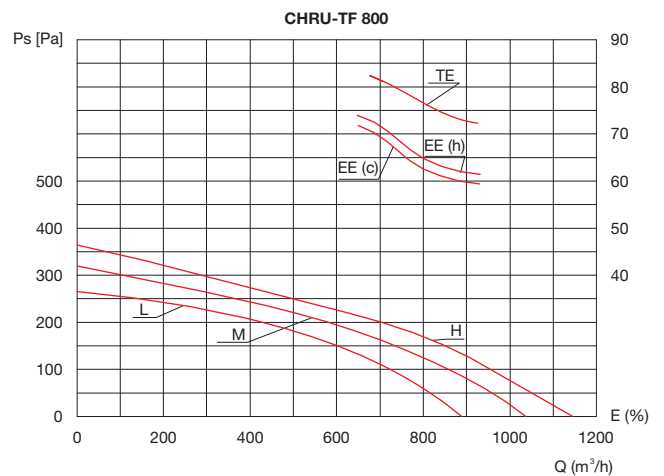
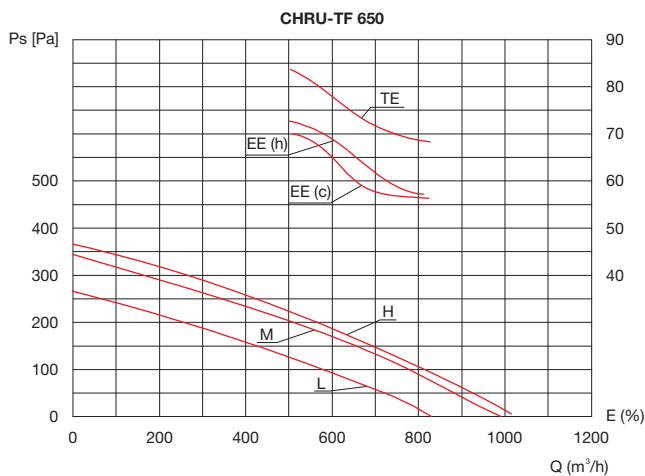
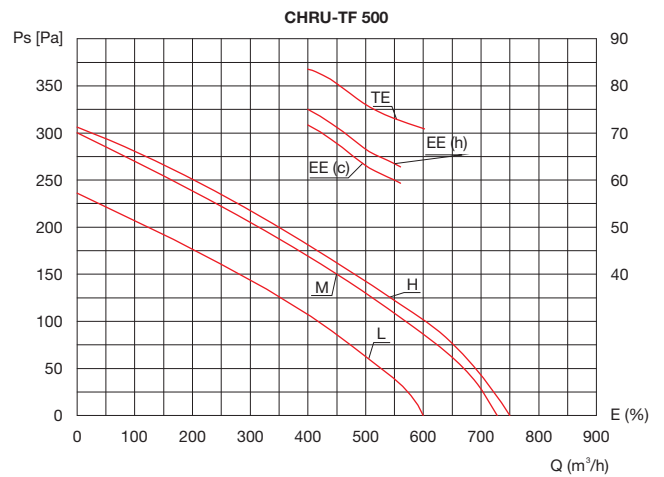
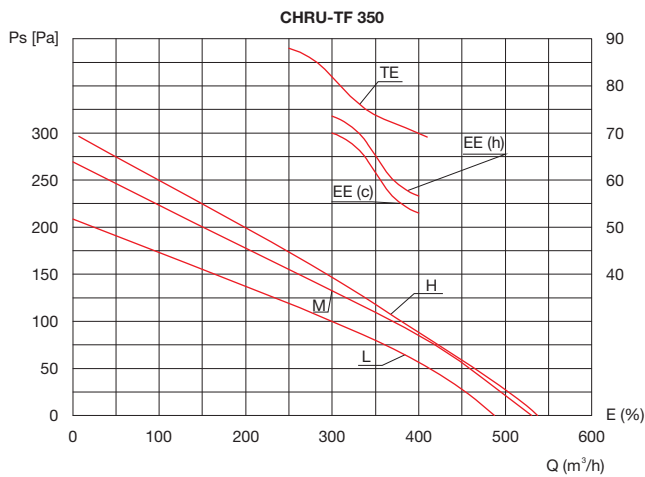
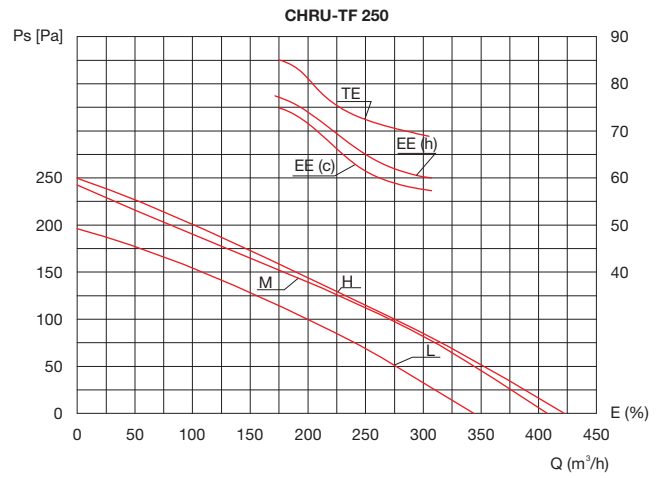
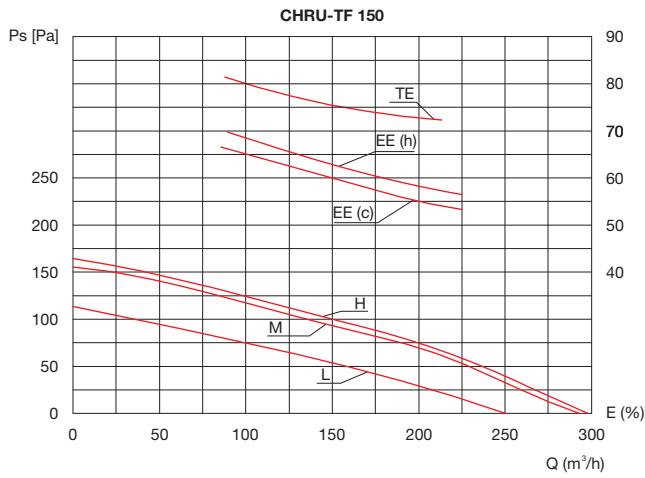


■ CHRU-TF 800 - CHRU-TF 1000

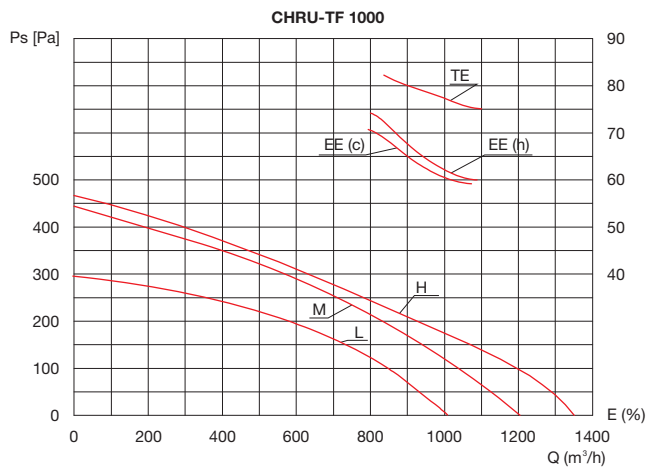
### Dimensions

	L	L1	W	W1	W2	H	H1	C	G		N	
	[mm]	[mm]	[mm]	[mm]	[mm]	[mm]	[mm]	[mm]	[mm]	[mm]	[mm]	
CHRU-TF 150	666	725	580	510	290	264	20	100	19		Ø144	
CHRU-TF 250	744	675	599	657	315	270	111	100	19		Ø144	
CHRU-TF 350	744	675	804	860	450	270	111	100	19		Ø144	
CHRU-TF 500	824	754	904	960	500	270	111	107	19		Ø194	
CHRU-TF 650	1116	1045	884	940	428	388	170	85	19		Ø242	
	L	L1	W	W1	H	H1	N	C	D	E	F	G
	[mm]	[mm]	[mm]	[mm]	[mm]	[mm]	[mm]	[mm]	[mm]	[mm]	[mm]	[mm]
CHRU-TF 800	1126	1056	834	891	388	169	Ø242	86	157	152	436	21
CHRU-TF 1000	1129	1060	1216	1273	388	171	Ø242	86	147	152	621	21

**Air Performance Graph**



**Air Performance Graph**



**Notes**

- Ps = external static pressure
- Q = air flow
- E = efficiency
- TE = temperature efficiency
- EE (h)/(c) = enthalpy efficiency heating / cooling

**Controller**



■ 10307



■ LH-10705

Controller type	10307	LH-10705
Temperature display	OA/RA/SA/FR temp.	OA/RA/SA/FR temp.
Speed selection	[yes]	[yes]
Weekly timer	[yes]	[yes]
Bypass	Auto	Auto
External ON/OFF	[yes]	[yes]
Comfortable heater control	[yes]	[yes]
Defrosting	[yes]	[yes]
CO2 control	[yes]	[yes]
Filter alarm	[yes]	[yes]
Fault alarm	[yes]	[yes]
Data memory	[yes]	[yes]
Night free cooling	[yes]	[yes]
BMS integration	[yes]	[yes]
Humidity control	[no]	[yes]
Defrosting heater control	[yes]	[yes]
Working condition monitor	[yes]	[yes]