



FDE40ZSXW1VH

4.0 (1.1 ~ 4.7)

Indoor Unit : FDE40VH

Outdoor Unit : SRC40ZSX-W1

Specifications

R32

Indoor unit			FDE40VH
Outdoor unit			SRC40ZSX-W1
Power source			1 Phase 220-240V, 50Hz / 220V, 60Hz
Nominal cooling capacity (Min~Max)		kW	4.0 (1.1 ~ 4.7)
Nominal heating capacity (Min~Max)		kW	4.5 (0.6 ~ 5.4)
Power consumption	Cooling/Heating	kW	1.02 / 1.10
EER/COP	Cooling/Heating		3.92 / 4.09
Inrush current		A	5
Max. running current		A	15
Sound power level*1	Indoor	Cooling/Heating	60 / 60
	Outdoor	Cooling/Heating	63 / 62
Sound pressure level*1	Indoor	Cooling (Hi/Me/Lo/Ulo)	46 / 38 / 36 / 31
		Heating (Hi/Me/Lo/Ulo)	46 / 38 / 36 / 31
	Outdoor	Cooling/Heating	52 / 50
Air flow	Indoor	Cooling (Hi/Me/Lo/Ulo)	13 / 10 / 9 / 7
		Heating (Hi/Me/Lo/Ulo)	13 / 10 / 9 / 7
	Outdoor	Cooling/Heating	39 / 30
Exterior Dimensions	Indoor	Height x Width x Depth	210 x 1,070 x 690
	Outdoor		640 x 800(+71) x 290
Net weight	Indoor / Outdoor	kg	28 / 45
Refrigerant	Type/GWP		R32/675
Refrigerant	Charge	kg/TCO2Eq	1.30/0.878
Refrigerant piping size	Liquid/Gas	ø mm	6.35(1/4") / 12.7(1/2")
Refrigerant line (one way) length		m	Max.30
Vertical height differences	Outdoor is higher/lower	m	Max.20 / Max.20
Outdoor operating temperature range	Cooling*2	°C	-15~46
	Heating		-20~20
Air filter quantity			Pocket Plastic net x2(Washable)
Remote control (option)			wired:RC-EX3A, RC-E5, RCH-E3 wireless:RCN-E-E3
Energy Class (Cooling/Heating)			A++/A+
SEER			6.46
SCOP (Average climate)			4.02
Pdesign (cooling/heating(@-10°C))		kW	4.0/3.0
Annual Electricity Consumption (cooling/heating)		kWh/a	217/1045
Designated Heating Season			Average

The data is measured under the following conditions (ISO-T1).

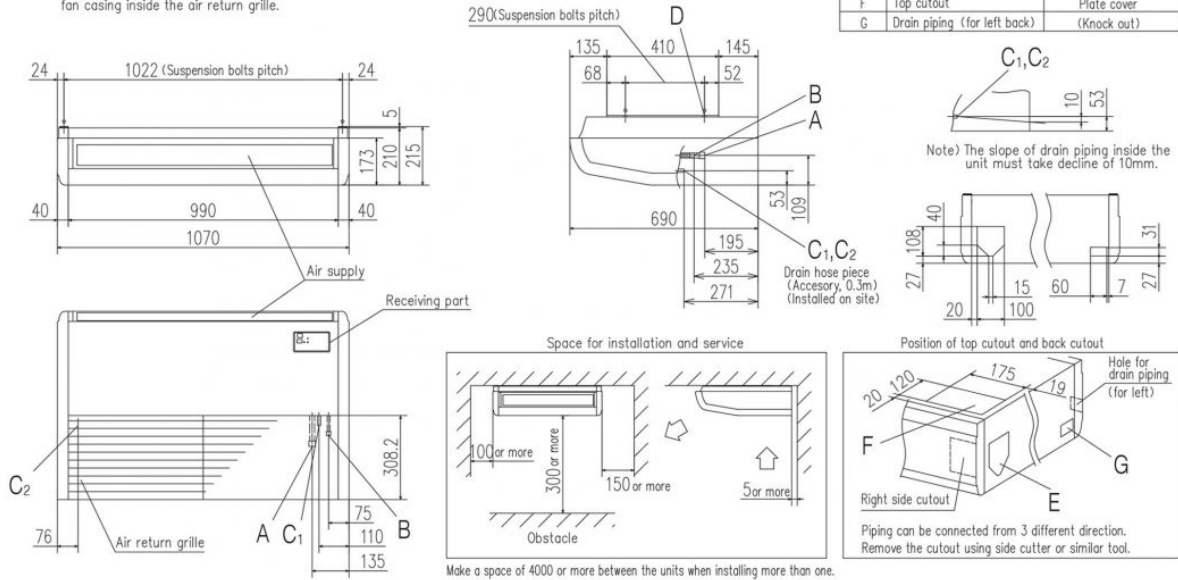
Cooling: Indoor temp. of 27°CDB, 19°CWB, and outdoor temp. of 35°CDB. Heating: Indoor temp. of 20°CDB, and outdoor temp. of 7°CDB, 6°CWB.

- : Indicates the value in an anechoic chamber. During operation these values are somewhat higher due to ambient conditions.
- : If a cooling operation is conducted when the outdoor air temperature is -5°C or lower, the outdoor unit should be installed at a place where it is not influenced by natural wind. If wind blows, the low pressure will drop and compressor frequency will increase, this will cause the capacity to drop and may cause the unit to break down.

Schematics

Models FDE40VH, 50VH

Note (1) The model name label is attached on the fan casing inside the air return grille.



SRC40ZSX-W1, 50ZSX-W1, 60ZSX-W1 SRC40ZSX-S, 50ZSX-S, 60ZSX-S

