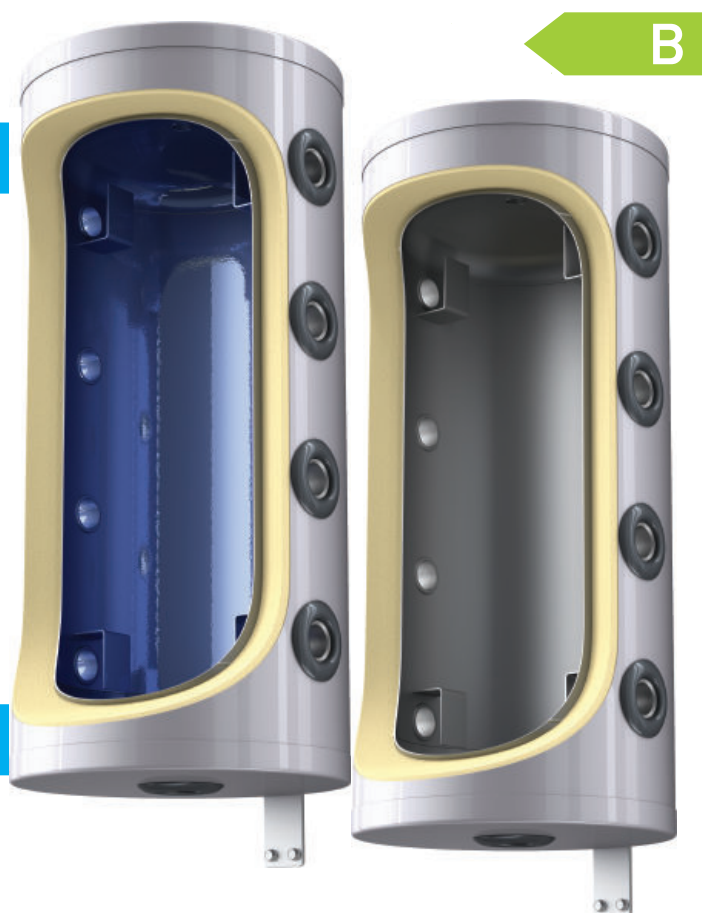


BUFFER TANKS (ENAMELLED AND NON-ENAMELLED) FOR HEAT PUMP SYSTEMS - 50, 80 LITERS

Main advantages:

- Range of 50 l and 80 l enamelled and non-enamelled buffer tanks
- For wall hung installation
- High energy efficiency class B
- Insulation of high density 50 mm PU for low energy losses
- 4 inlets and 4 outlets with G 1.1/4" for higher flow rate

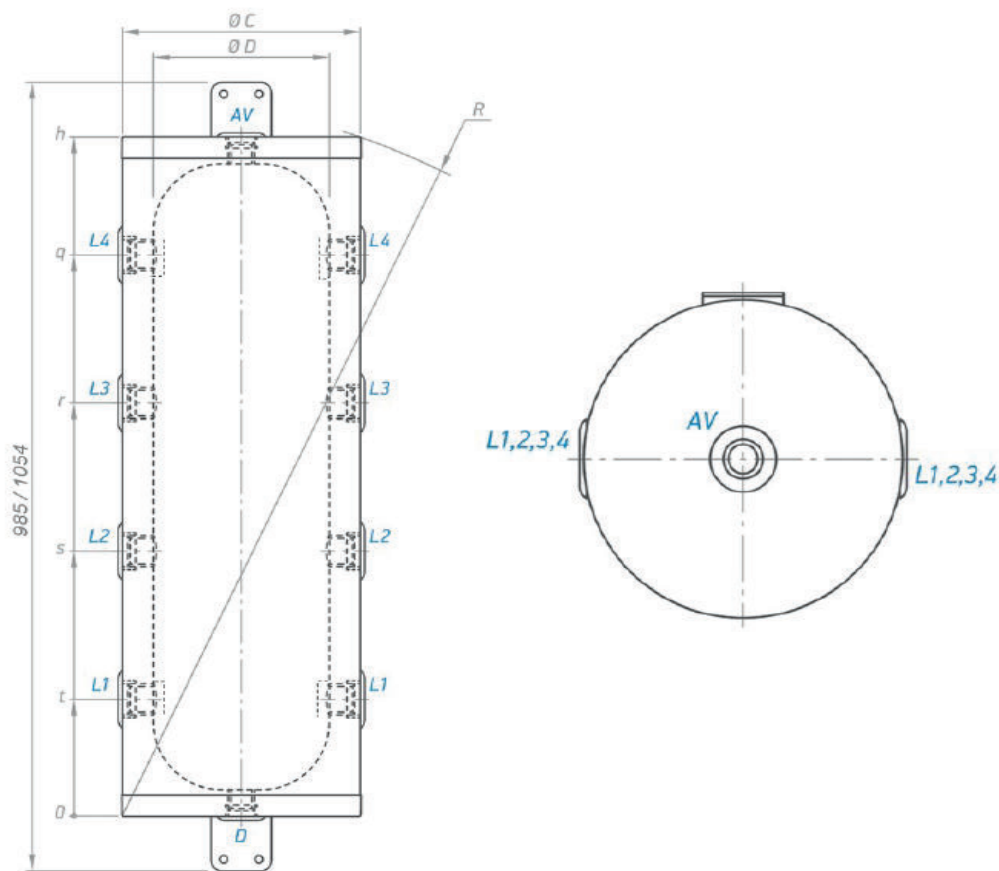


MODELS		V 50 40	V 80 46	EV 50 40	EV 80 46
Art.number	No	423103	423100	423102	423101
Capacity	L	51	80	51	80
Net weight	kg	23.2	35	24.2	36
Insulation / (rigid PU)	mm	50	50	50	50
Heat losses ΔT_{45K}	W	38	45	38	45
Energy efficiency class		B	B	B	B
Maximum operational temperature	°C	95	95	95	95
Rated pressure	bar	6	6	6	6

EV 50 40 and EV 80 46 models are enamelled. V 50 40 and V 80 46 models are not enamelled.

Drawings and dimensions

Dimensions ±5mm		V 50 36	V 80 46	EV 50 40	EV 80 46
h	mm	865	915	865	915
q	mm	718	742	718	742
r	mm	528	552	528	552
s	mm	338	362	338	362
t	mm	148	172	148	172
R	mm	953	1006	953	1006
ØC	mm	400	460	400	460
ØD	mm	300	360	300	360



		V 50 36	V 80 46	EV50 40	EV 80 46
AV	Opening for air ventilation	G 3/4"	G 3/4"	G 3/4"	G 3/4"
D	Drainage	G 1 1/2"	G 1 1/2"	G 1 1/2"	G 1 1/2"
L1	Level 1	G 1 1/4"	G 1 1/4"	G 1 1/4"	G 1 1/4"
L2	Level 2	G 1 1/4"	G 1 1/4"	G 1 1/4"	G 1 1/4"
L3	Level 3	G 1 1/4"	G 1 1/4"	G 1 1/4"	G 1 1/4"
L4	Level 4	G 1 1/4"	G 1 1/4"	G 1 1/4"	G 1 1/4"

Thread designations according to EN ISO 228-1!